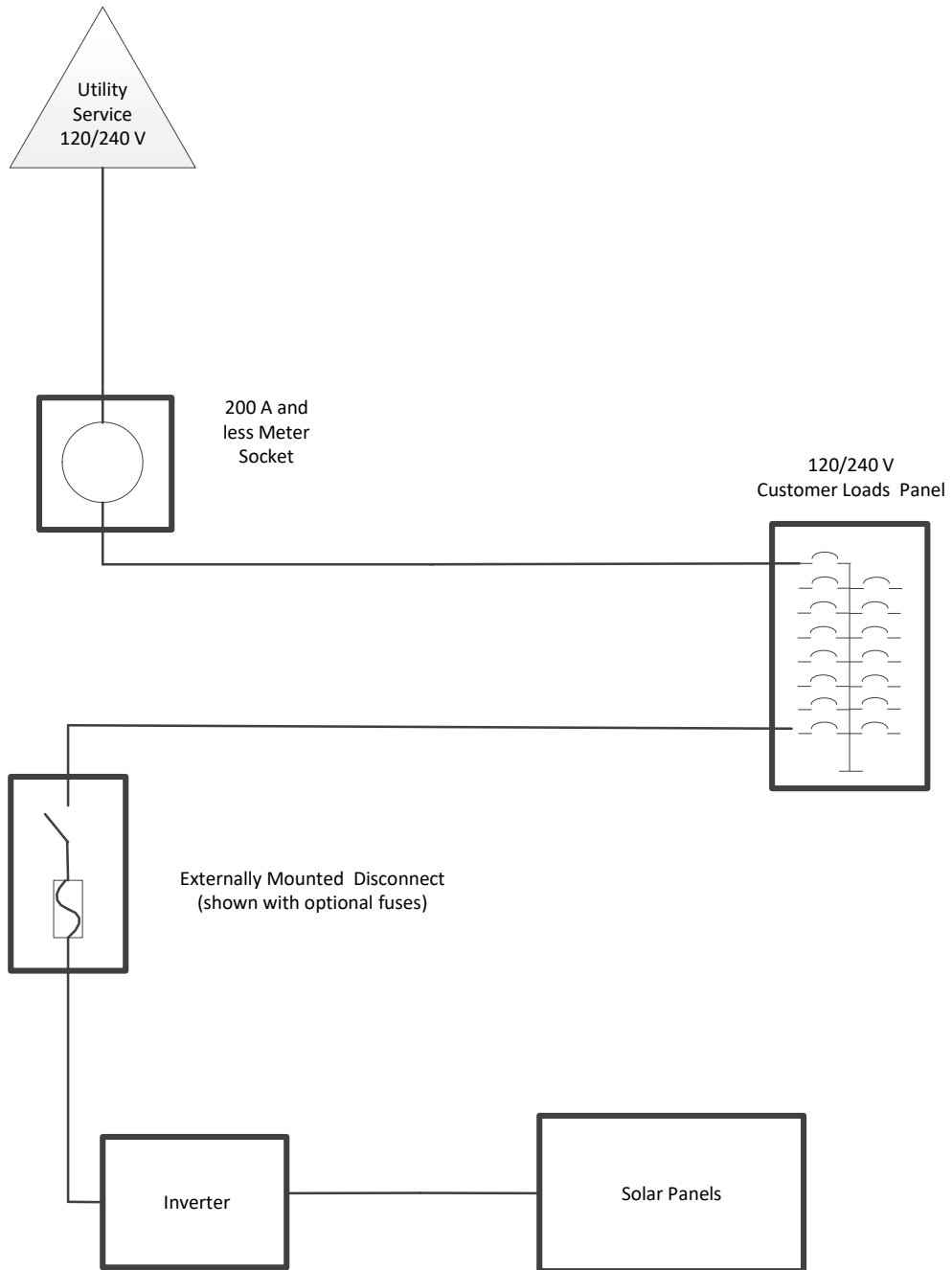


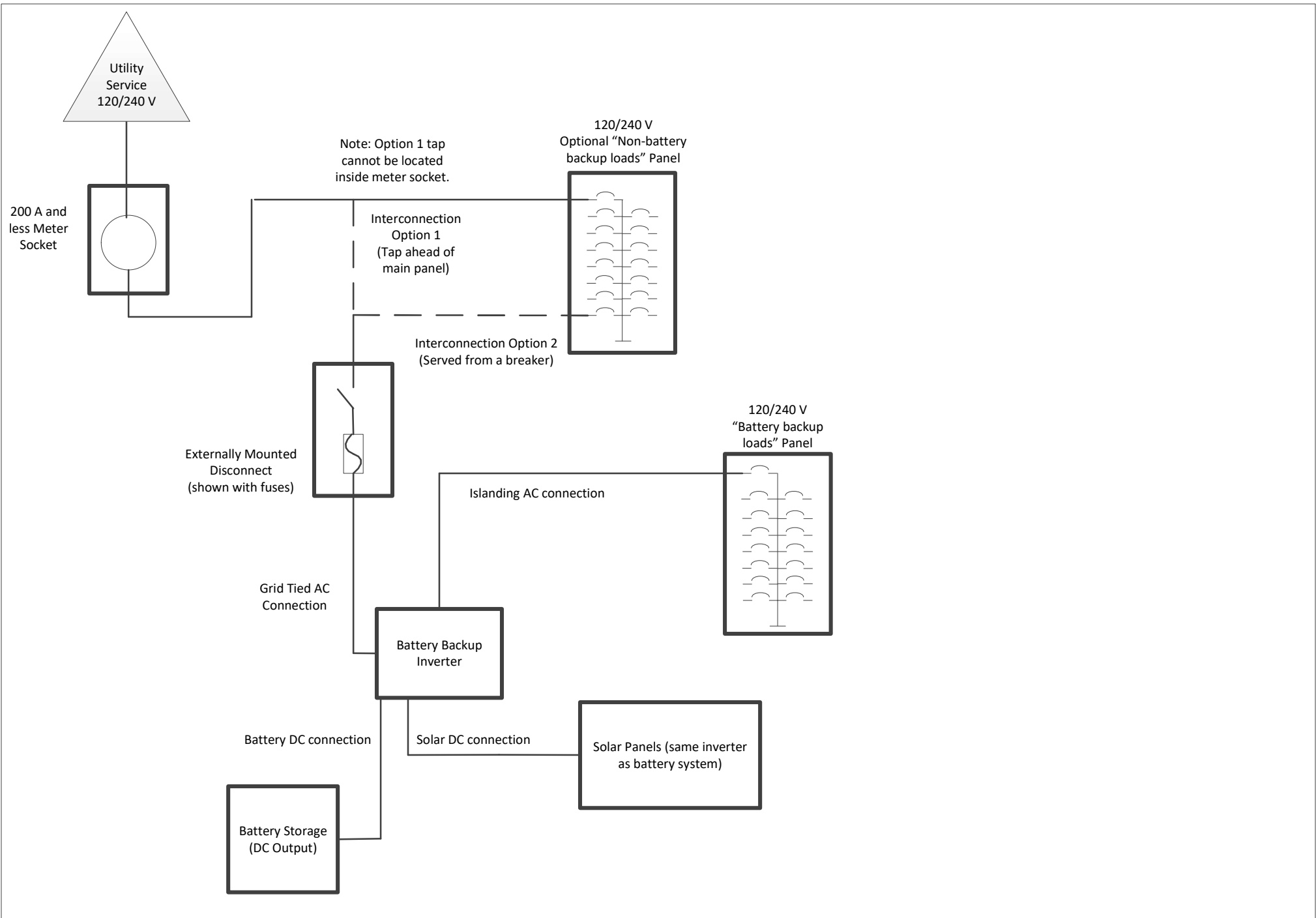
## **UMERC overhead service - customer owned generation** **solar one-line diagrams**

- The inverter shall be UL 1741 compliant.
- The external disconnect shall provide a visible open between its contacts, have the ability to be locked in the open position and have 24/7 ready access for utility workers.
- Breakers (including breakers integrated in metering equipment) and air conditioner “pull out” disconnects are not acceptable.
- If the PV Disconnect Switch is not located within sight of the Utility Meter, a placard must be placed at both the meter and disconnect switch indicating the location with respect to the other.
- Please list the one-line diagram number (example: “O3”) that is referenced on the submitted one-line diagram.
- Example one-line diagrams show the minimum required alternating current disconnects.
- One-line diagram must be located near metering equipment and protected from the environment.

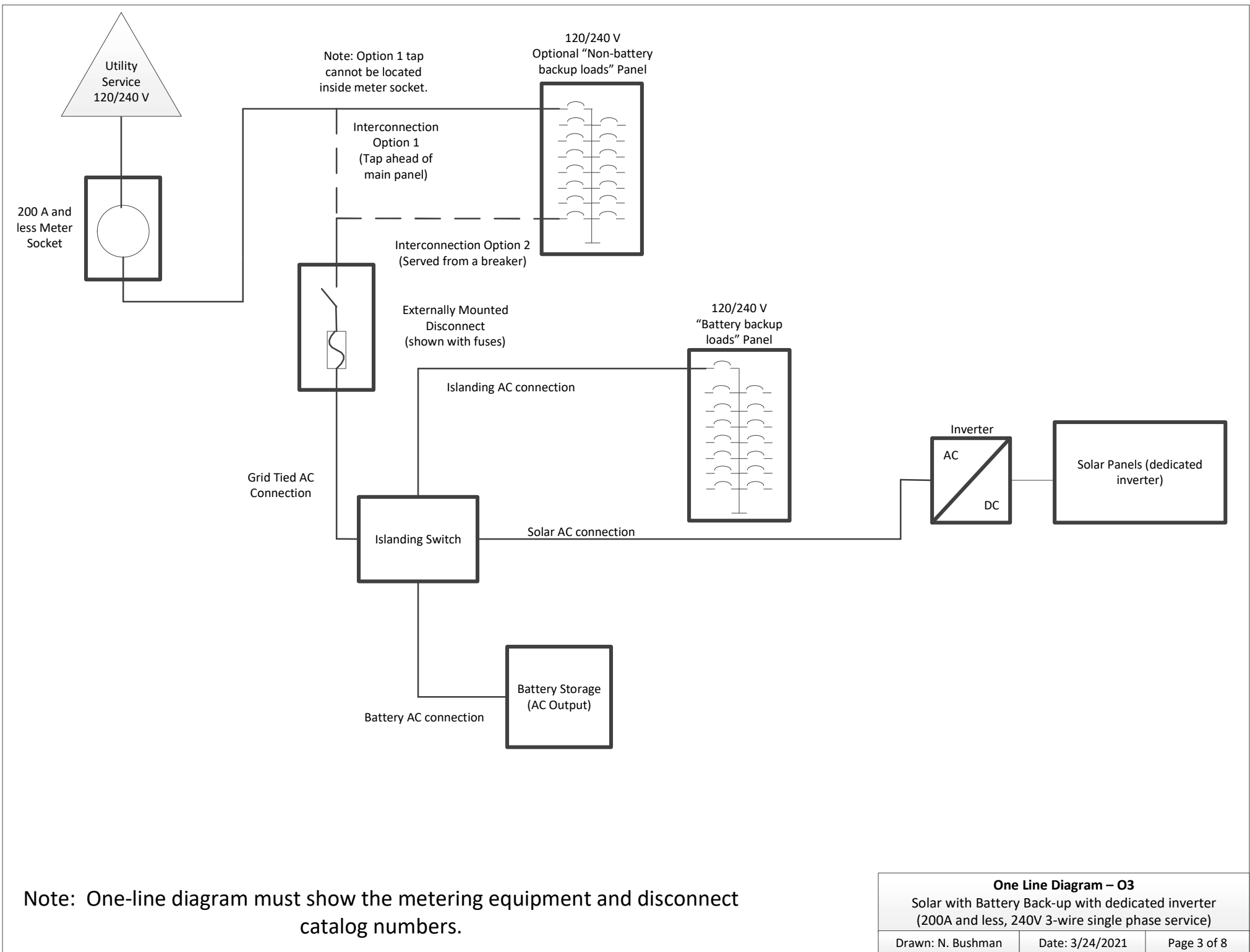


Note: One-line diagram must show the metering equipment and disconnect catalog numbers.

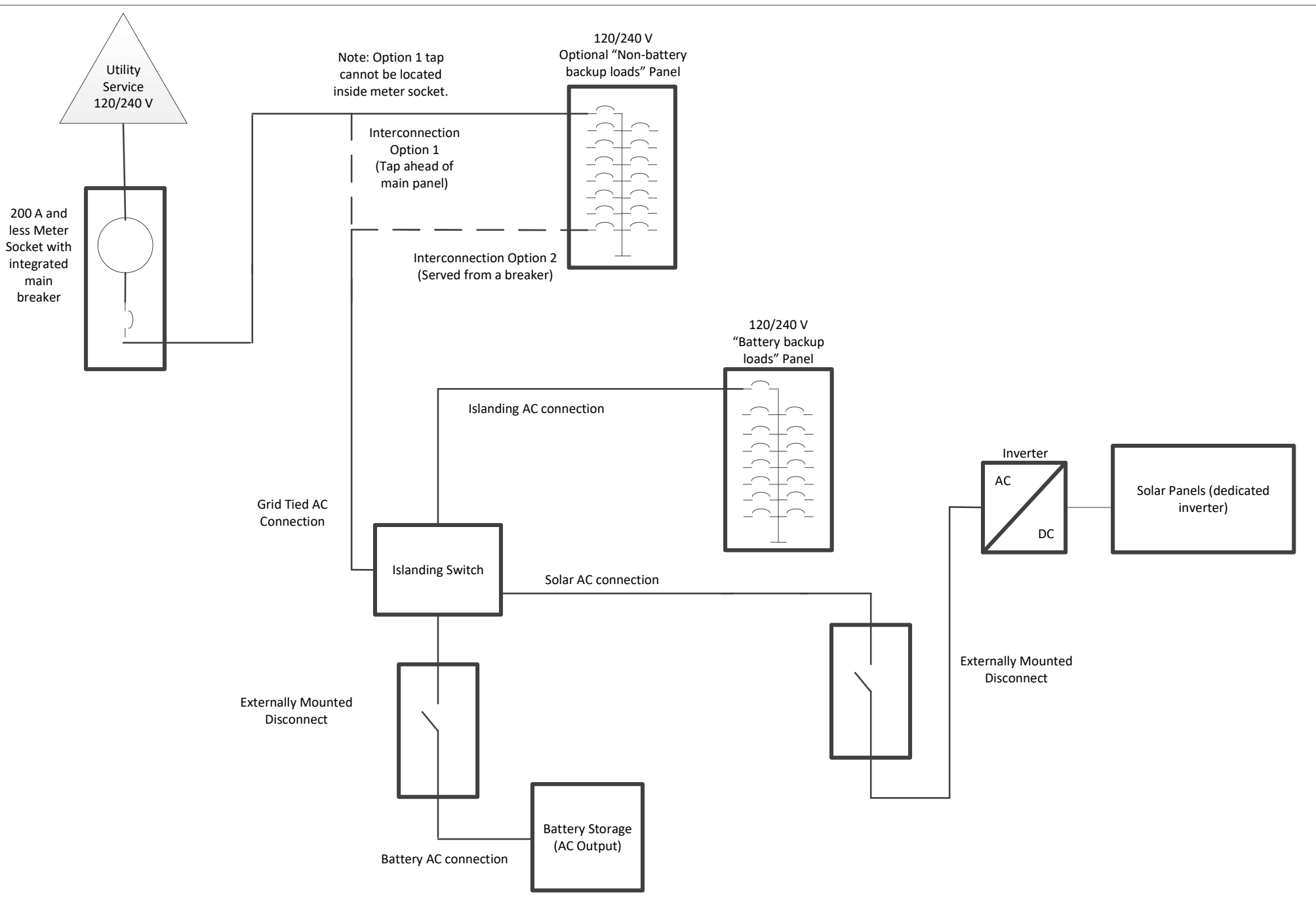
<b>One Line Diagram – O1</b>		
Solar with a 200A and less meter socket (200A and less, 240V 3-wire single phase service)		
Drawn: N. Bushman	Date: 3/24/2021	Page 1 of 8



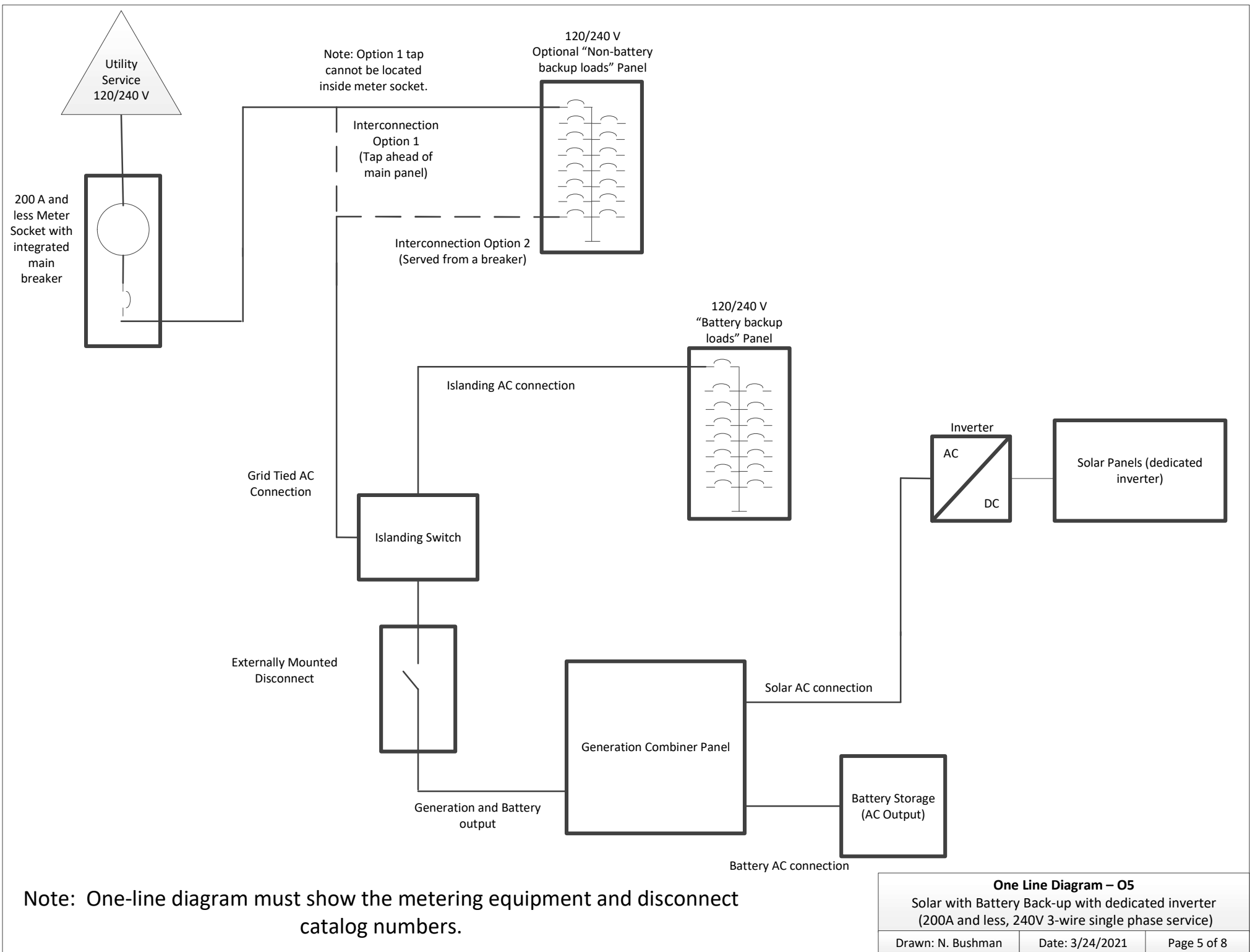
Note: One-line diagram must show the metering equipment and disconnect catalog numbers.



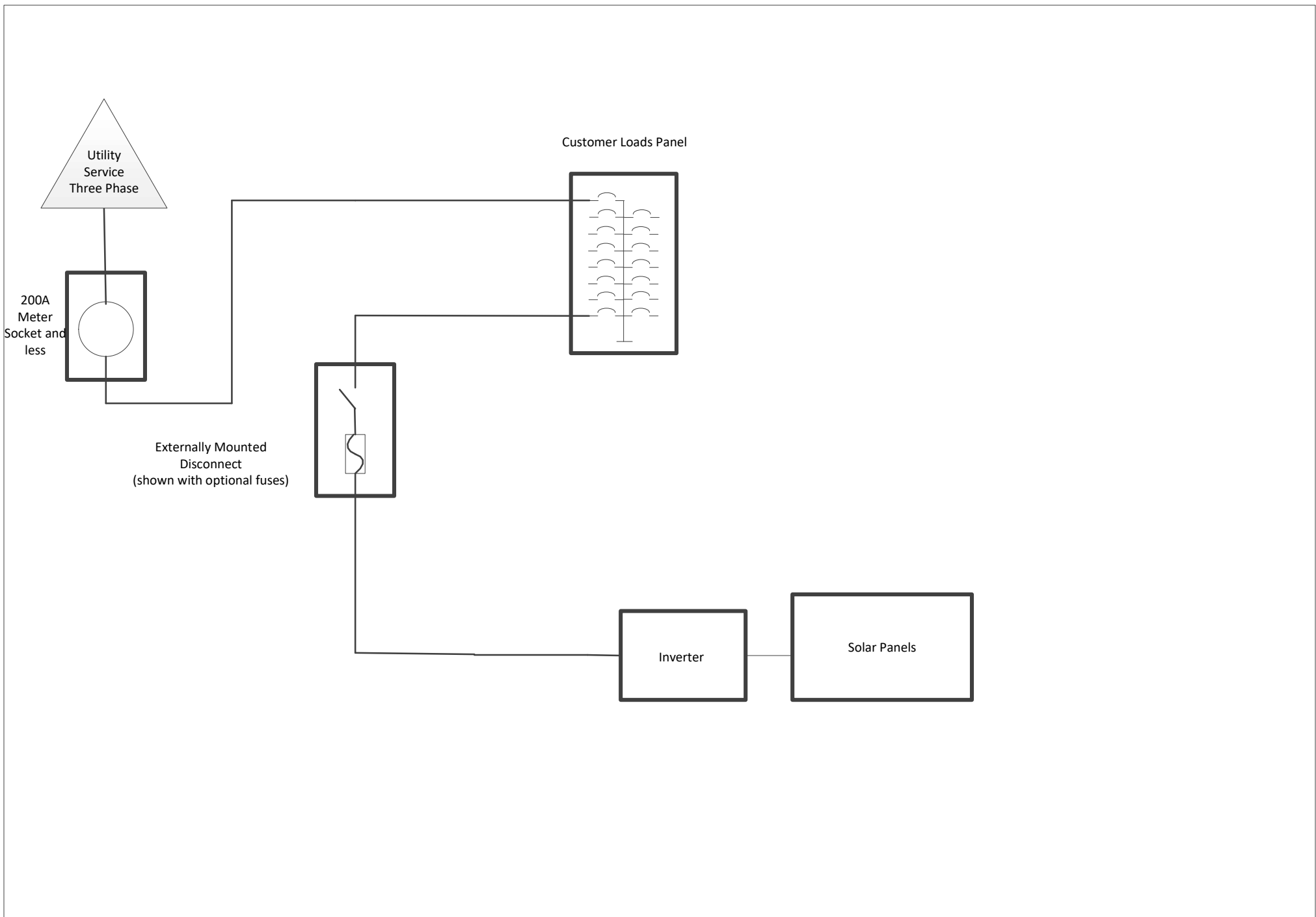
Note: One-line diagram must show the metering equipment and disconnect catalog numbers.



Note: One-line diagram must show the metering equipment and disconnect catalog numbers.

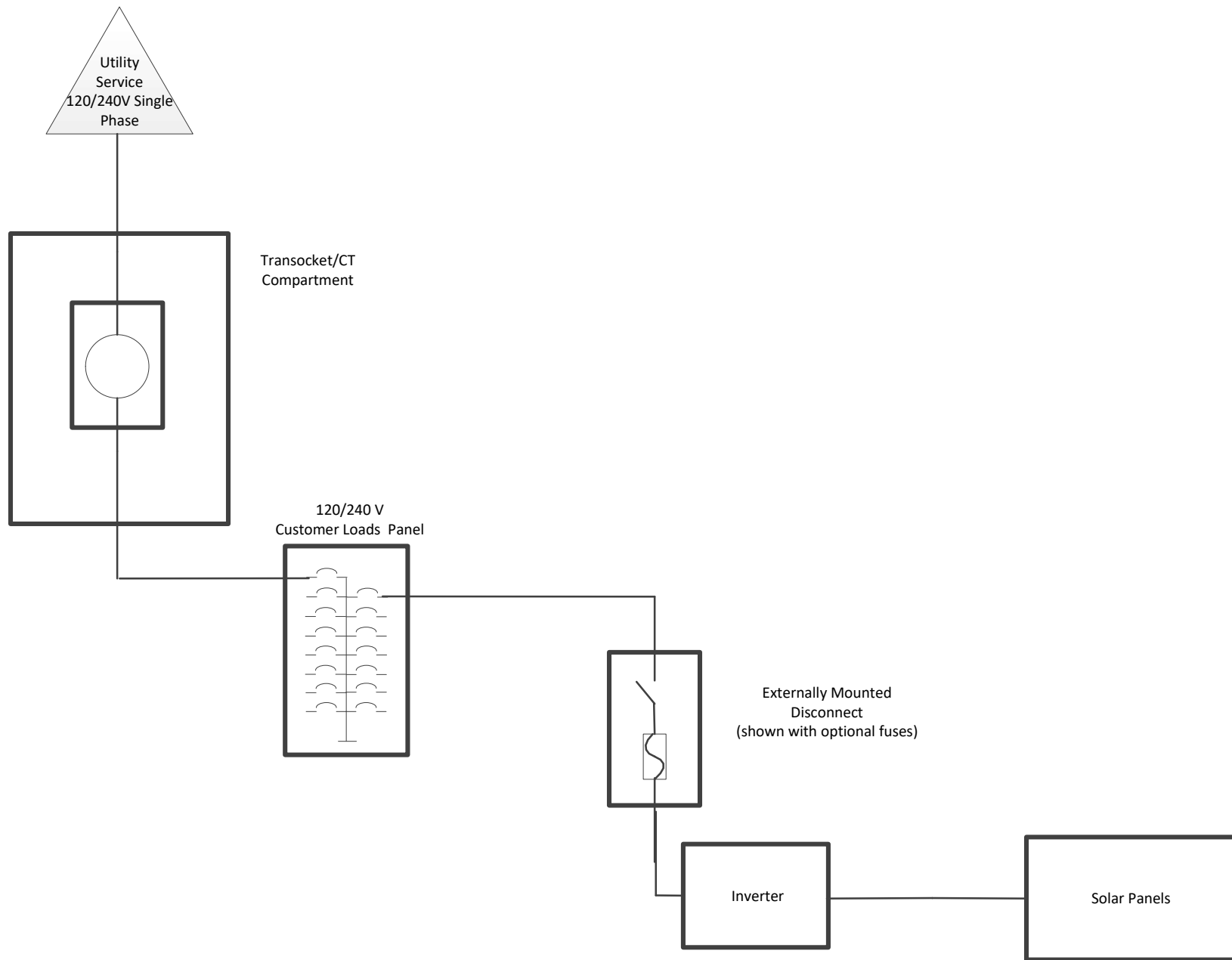


Note: One-line diagram must show the metering equipment and disconnect catalog numbers.



Note: One-line diagram must show the metering equipment and disconnect catalog numbers.

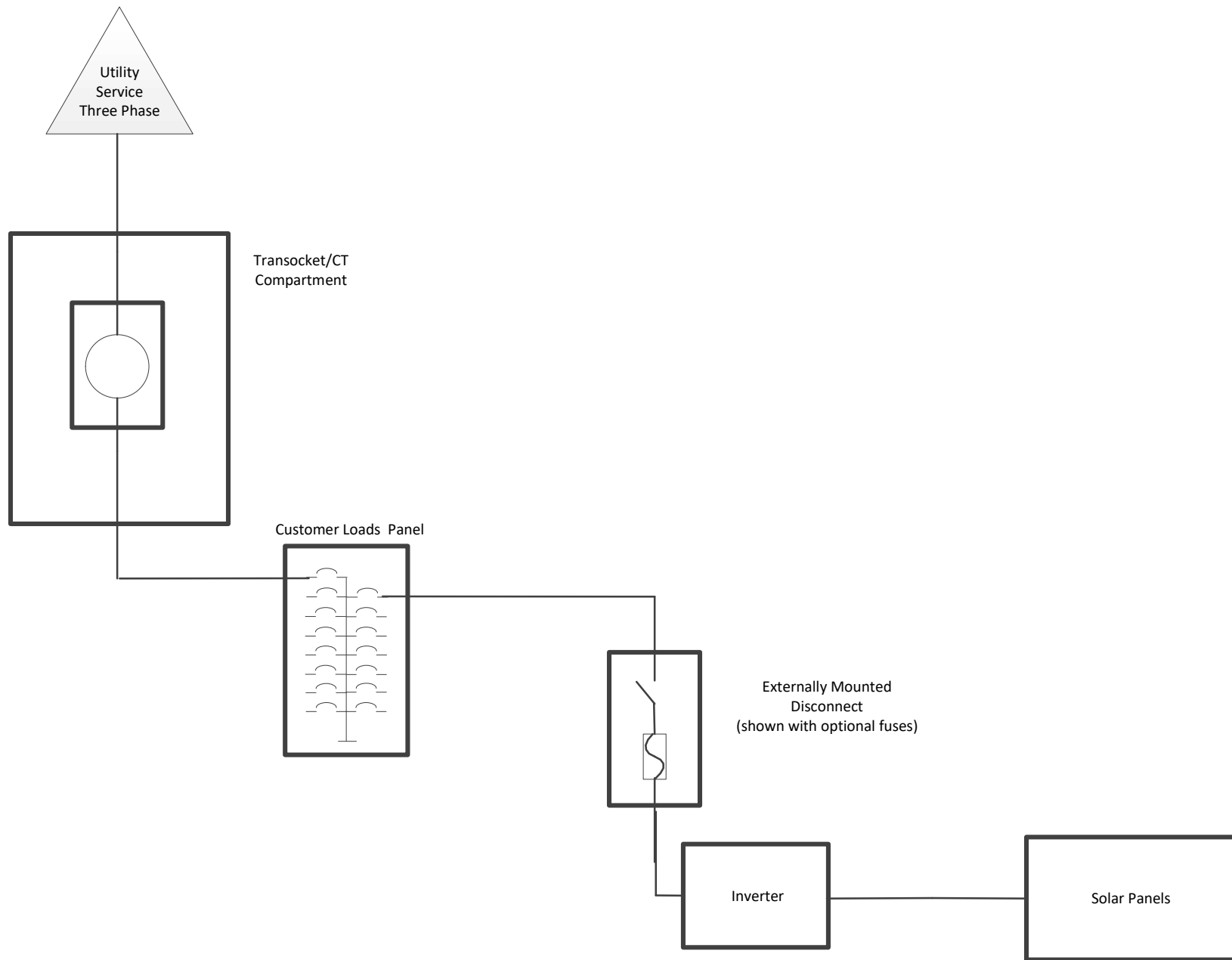
<b>One Line Diagram – O6</b>		
Three phase solar		
(Three phase 200A and less Service)		
Drawn: N. Bushman	Date: 3/24/2021	Page 6 of 8



Note: One-line diagram must show the metering equipment and disconnect catalog numbers.

<b>One Line Diagram – 07</b>		
Solar with a transsocket		
(Single Phase Service 400-800A)		
Drawn: N. Bushman	Date: 3/24/2021	Page 7 of 8





Note: One-line diagram must show the metering equipment and disconnect catalog numbers.

<b>One Line Diagram – 08</b>		
Solar with a transsocket (Three Phase Service 400-1200A)		
Drawn: N. Bushman	Date: 3/24/2021	Page 8 of 8