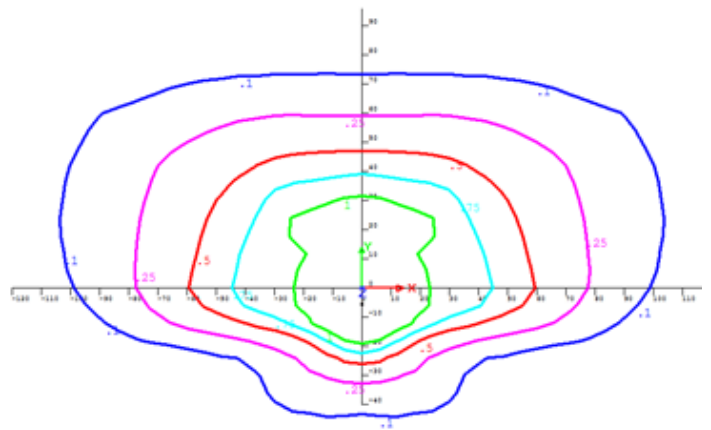


Non-Standard LED Rates LE-4 / LE-6

Oval, Gray						
Lumen Output	Fixture Class	Rated Watts	Billed kWh	Installation Charge	Monthly Rate <84 mon	Monthly Rate 85 +mon
Low 3K	C	48	17	see Note	\$8.78	\$7.43
Low 4K	C	43	16	see Note	\$8.78	\$7.43
Med 3K	D	97	35	See Note	\$10.92	\$9.67
Med 4K	D	97	35	see Note	\$10.92	\$9.67
High 4K	E	157	57	see Note	\$13.31	\$12.17



Medium Output shown

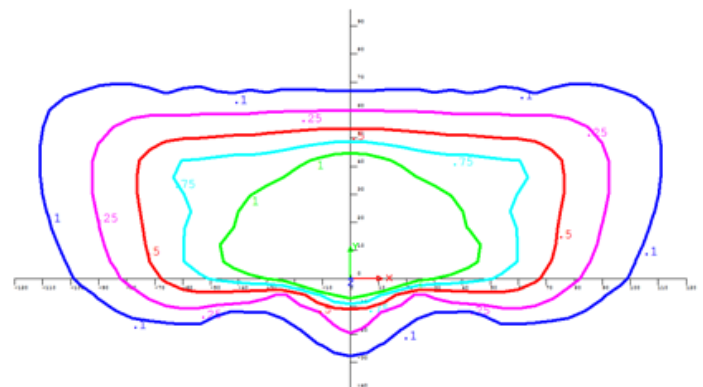


Medium Oval @30' MH

Rectangular, Dark Bronze						
Lumen Output	Fixture Class	Rated Watts	Billed kWh	Installation Charge	Monthly Rate <84 mon	Monthly Rate 85 +mon
Low 3K	D	59	21	see Note	\$9.59	\$8.34
Low 4K	D	50	18	see Note	\$9.33	\$8.08
Med 3K	E	104	37	see Note	\$11.73	\$10.59
Med 4K	E	93	34	see Note	\$13.80	\$10.86
High 4K	F	165	59	see Note	\$14.12	\$13.09



Medium Output shown



Medium Rectangular @30' MH

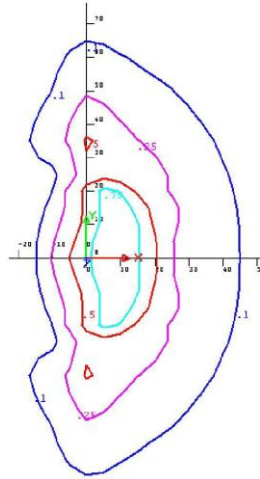
Note: Installation Charge is the estimated installed cost of all lighting related facilities

Non-Standard LED Rates LE-4 / LE-6

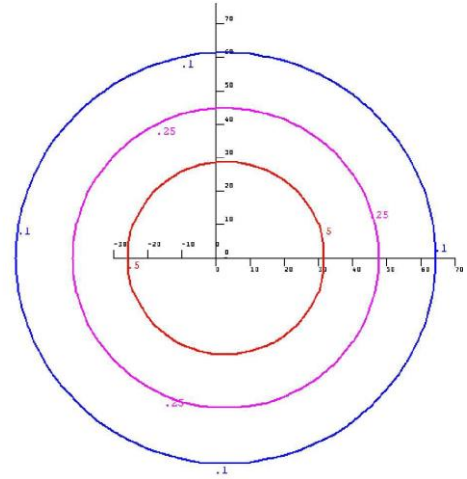
Yard Light, Gray						
Lumen Output	Fixture Class	Rated Watts	Billed kWh	Installation Charge	Monthly Rate <84 mon	Monthly Rate 85 +mon
V Low	B	22	8	see Note	\$7.44	\$5.98
Low	B	40	14	see Note	\$7.98	\$6.52



Very Low includes 3" lens
Low includes 2" glare shield



Very Low @ 25' MH

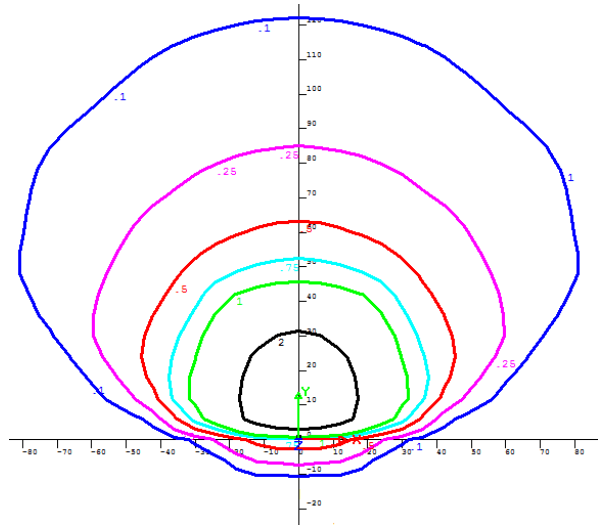


Low @ 25' MH

Flood Light, Dark Bronze						
Lumen Output	Fixture Class	Rated Watts	Billed kWh	Installation Charge	Monthly Rate <84 mon	Monthly Rate 85 +mon
Low	E	85	31	see Note	\$11.19	\$10.05
Med	G	129	47	see Note	\$13.60	\$12.68
High	H	199	72	see Note	\$16.27	\$15.45



Medium Output shown



Medium Floodlight @ 30' MH

Note: Installation Charge is the estimated installed cost of all lighting related facilities