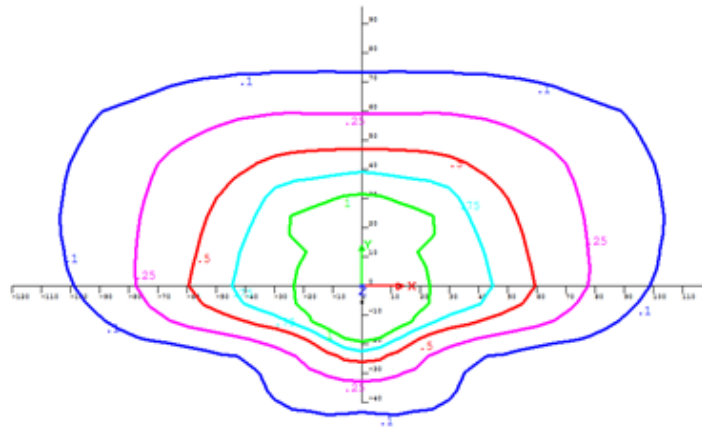


# Non-Standard LED Rates LE-8 / LE-0 UMERC WEPCo Zone

Oval, Gray						
Lumen Output	Fixture Class	Rated Watts	Billed kWh	Installation Charge	Monthly Rate <84 mon	Monthly Rate 85 +mon
Low 3K	C	48	17	see Note	\$11.32	\$8.74
Low 4K	C	43	16	see Note	\$11.32	\$8.74
Med 3K	D	97	35	See Note	\$14.87	\$12.29
Med 4K	D	97	35	see Note	\$14.87	\$12.29
High 4K	E	157	57	see Note	\$18.90	\$16.32

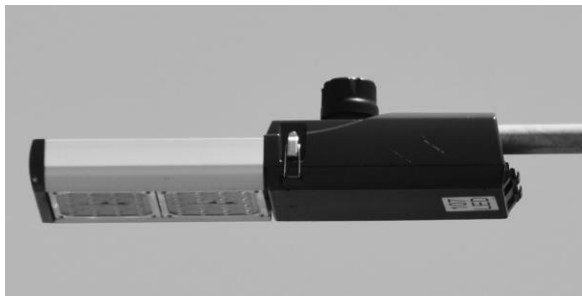


Medium Output shown

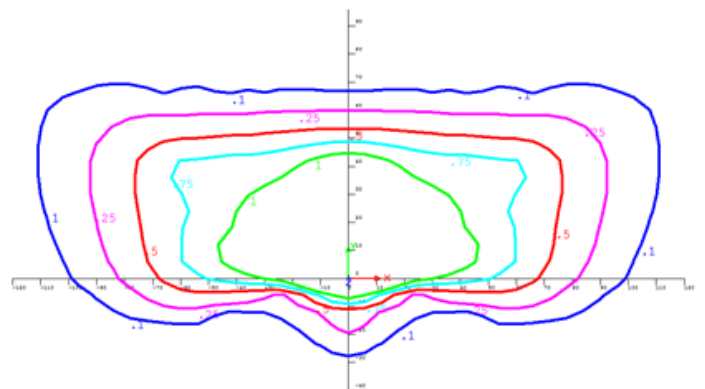


Medium Oval @30' MH

Rectangular, Dark Bronze						
Lumen Output	Fixture Class	Rated Watts	Billed kWh	Installation Charge	Monthly Rate <84 mon	Monthly Rate 85 +mon
Low 3K	D	59	21	see Note	\$12.45	\$9.87
Low 4K	D	50	18	see Note	\$11.97	\$9.39
Med 3K	E	104	37	see Note	\$16.00	\$13.42
Med 4K	E	93	34	see Note	\$15.52	\$12.94
High 4K	F	165	59	see Note	\$20.04	\$17.46



Medium Output shown



Medium Rectangular @30' MH

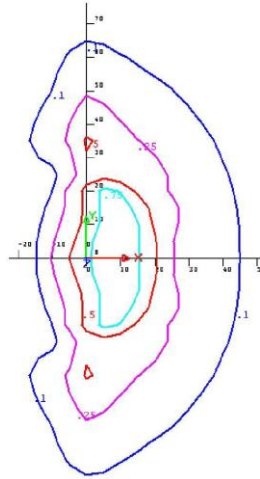
Note: Installation Charge is the estimated installed cost of all lighting related facilities

# Non-Standard LED Rates LE-8 / LE-0 UMERC WEPCo Zone

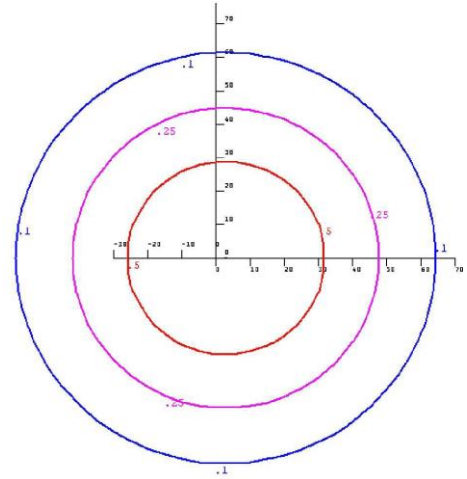
Yard Light, Gray						
Lumen Output	Fixture Class	Rated Watts	Billed kWh	Installation Charge	Monthly Rate <84 mon	Monthly Rate 85 +mon
V Low	B	22	8	see Note	\$9.22	\$6.64
Low	B	40	14	see Note	\$10.19	\$7.61



**Very Low includes 3" lens**  
**Low includes 2" glare shield**



**Very Low @ 25' MH**

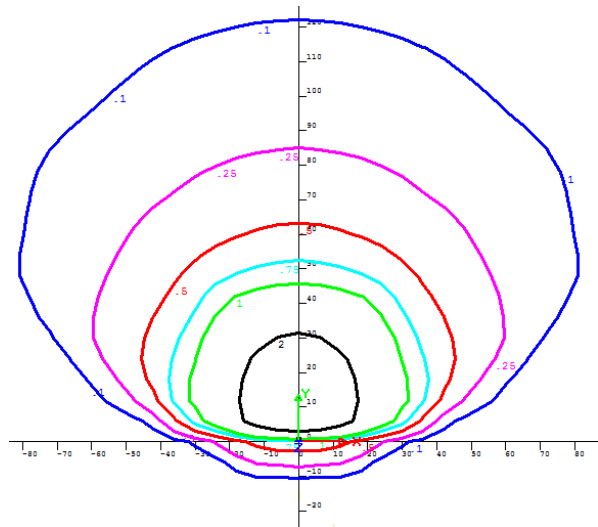


**Low @ 25' MH**

Flood Light, Dark Bronze						
Lumen Output	Fixture Class	Rated Watts	Billed kWh	Installation Charge	Monthly Rate <84 mon	Monthly Rate 85 +mon
Low	E	85	31	see Note	\$15.04	\$12.46
Med	G	129	47	see Note	\$18.75	\$16.17
High	H	199	72	see Note	\$23.27	\$20.69



**Medium Output shown**



**Medium Floodlight @ 30' MH**

*Note: Installation Charge is the estimated installed cost of all lighting related facilities*