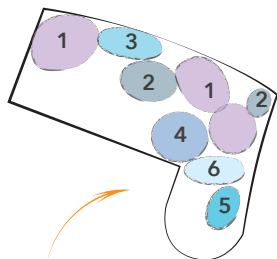
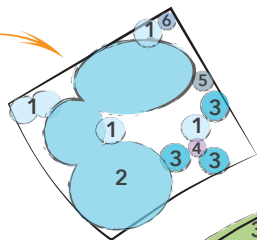


# 2024 Energy Park Gardens

\*Plants new to Energy Park in 2024

## Shade garden

- 1 - Jack Frost Brunnera
- 2 - Barrenwort
- 3 - Green Spice Coral Bells
- 4 - Ghost Fern
- 5 - Lady's Mantle
- 6 - Mouse Ears Hosta

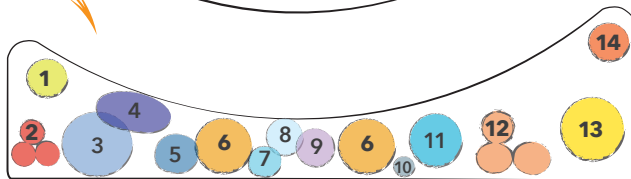


## Rain garden

- 1 - Pink Turtlehead
- 2 - Variegated Palm Sedge
- 3 - Wood Betony
- 4 - Baby Joe Dwarf Joe Pye Weed
- 5 - Iron Butterfly Ironweed
- 6 - Purple Coneflower

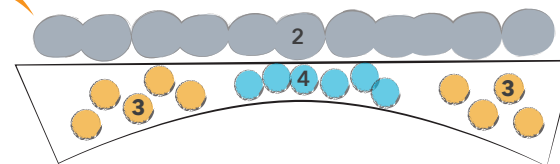
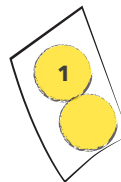
## Narrow screen bed

- 1 - Pop Star Hydrangea\*
- 2 - Little Red Fox Little Bluestem\*
- 3 - Sweet Summer Love Clematis
- 4 - Calamint
- 5 - Bubblegum Pink Phlox
- 6 - Fiber Optics Buttonbush\*
- 7 - Common Milkweed
- 8 - Queen-of-the-Prairie
- 9 - Black-eyed Susan
- 10 - Blazing Star
- 11 - Walker's Low Catmint
- 12 - Blackhawks Big Bluestem\*
- 13 - Red Pillar Rose of Sharon\*
- 14 - Eclipse Hydrangea\*



## Raised beds

- 1 - Red Pillar Rose of Sharon\*
- 2 - Diablo Ninebark
- 3 - American Gold Rush Rudbeckia
- 4 - Mixed Coneflower

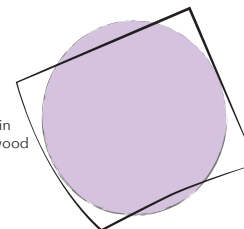


## Main garden

- 1 - Candicans Concolor Fir
- 2 - Autumn Brilliance Serviceberry
- 3 - Garden Glow Dogwood
- 4 - Ghost Fern
- 5 - Barrenwort
- 6 - Jack Frost Brunnera
- 7 - Hostas
- 8 - Walker's Low Catmint
- 9 - Rozanne Geranium
- 10 - Calamint
- 11 - Tricolor Sage
- 12 - Thyme
- 13 - My Monet Weigela
- 14 - Pixwell Gooseberry
- 15 - Cool Splash Diervilla
- 16 - Summer Beauty Allium
- 17 - Garden Phlox
- 18 - Japanese Burnet
- 19 - Minnie Pearl Phlox
- 20 - Pink Diamonds Bleeding Heart\*
- 21 - Summerific All Eyes on Me Hibiscus\*
- 22 - Black-eyed Susan
- 23 - Purple Coneflower
- 24 - Iceberg Alley Sageleaf Willow
- 25 - Cobalt-N-Gold Hypericum\*
- 26 - Dwarf Russian Sage
- 27 - Prairie Dropseed
- 28 - Incrediball Hydrangea
- 29 - Raspberry Wine Bee Balm
- 30 - Raspberry Shortcake Raspberry
- 31 - Stonecrop
- 32 - Rainbow Knock Out Rose
- 33 - Tiny Quick Fire Hydrangea\*

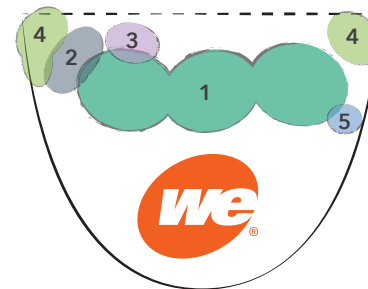
BRICK WALKWAY

J.N. Strain  
Musclewood



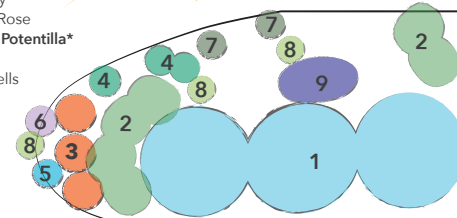
## Demonstration bed

- 1 - Oakleaf Hydrangea
- 2 - Raspberry Wine Bee Balm
- 3 - Pinky Winky Hydrangea
- 4 - Lamb's Ear
- 5 - Columbine



## N. E. corner bed

- 1 - Black Lace Elderberry
- 2 - Rainbow Knock Out Rose
- 3 - Happy Face Orange Potentilla\*
- 4 - Rozanne Geranium
- 5 - Green Spice Coral Bells
- 6 - Black-eyed Susan
- 7 - Prairie Dropseed
- 8 - Purple Coneflower
- 9 - Yucca



## Special thanks to:

Ansay & Associates  
Billy Goat Mulch  
Corona Tools  
Crawford Tree & Landscape Services, Inc  
Createscape Landscaping Service, Inc.  
Diggers Hotline

Ebert's Greenhouse Village  
First Editions® Shrubs & Trees  
Groth's Country Gardens  
Intrinsic Perennial Gardens  
Landworks  
Melinda Myers LLC  
Dawn Stark, Diana Paul, Julie Brothen, Kathleen McLaughlin

Milorganite  
Milwaukee Metropolitan Sewerage District  
MJS Landscaping  
Eric Morgan  
Peaces of Love  
Plantskydd Animal Repellent

Proven Winners® ColorChoice® Shrubs  
Reinders  
Stone Oak Landscapes  
Summit® Mosquito Dunks®  
Summit® Year-Round® Spray Oil  
Suntory SOIREE® KAWAII Vinca  
Terra-Firma Landscape

Walters Gardens & Proven Winners®  
Wild Valley Farms Wool Pellets  
William J Wandsnider & Associates  
WI Dept. of Natural Resources  
Terrestrial Invasive Species  
Nate Zilles  
Steve Zimmer