



Farm Energy News

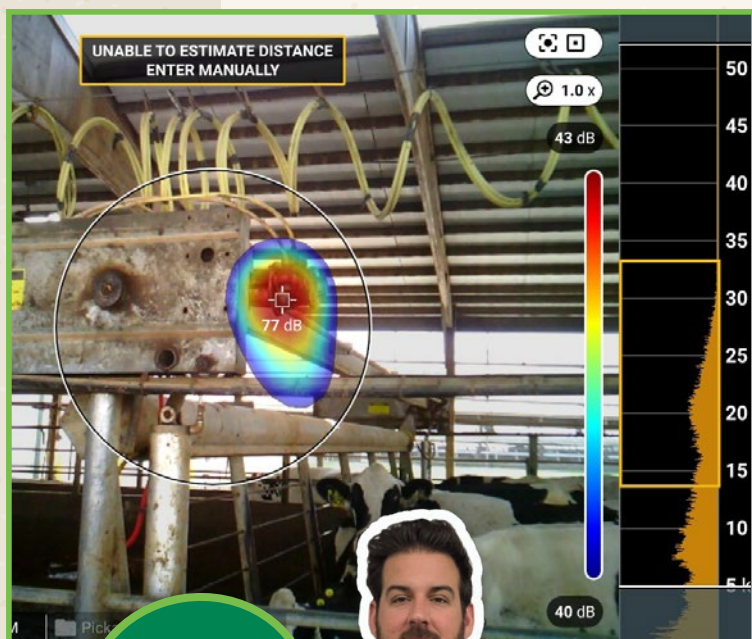
Winter 2026

Is your farm's compressed air wasting energy?

Let our acoustic imager find out

Compressed air is widely used on farms throughout Wisconsin, and is often one of the largest contributors to your energy bill. 85% of the energy used to create compressed air turns into wasted heat, and artificial demand or leaks can make up a significant portion of the remaining 15%.

With a free 30-minute site visit, We Energies can investigate wasted energy using our new Fluke acoustic imager to quickly and easily visualize leaks via a heat map. You'll also get a report detailing the leaks and estimated future energy savings if they are repaired.



The acoustic imager uses an array of microphones to listen for sounds, and then processes the time and intensity of the leak at each frequency. The device calculates the distance and automatically logs the data internally. From there, a "heat map" is overlaid onto the screen image using color to show the intensity of the leak — with red being the most severe. Each audible leak can cost farmers around \$500 per year.

During our visit, we'll investigate and catalog common leaks around disconnects, hoses, shut-off valves and pipe joints — and any other areas of concern. Afterwards, you'll receive a report containing data on cubic feet per minute, kilowatt-hours per year, energy costs per year and emissions for your review.

FREE
site visit



If you're using compressed air and have energy bills over \$500 a month, reach out to **Danny Leonard** at 831-998-1430 for this free service.



Powering Growth in Wisconsin

Economic growth continues to flourish in our service area. Companies are investing in major projects, including data centers and modern manufacturing facilities.

As We Energies prepares for unprecedented electric demand growth in the years ahead, a balanced generation mix will be key to maintaining the reliable, affordable energy our customers depend on.

WEC Energy Group, parent company of We Energies, plans to add more than 3,630 megawatts (MW) of modern, efficient natural gas generation between 2026 and 2030. Also, investments will be made in reliability for our natural gas network with new liquefied natural gas (LNG) storage. LNG facilities are needed to ensure gas supply for winter reliability — to meet peak customer demand for heating and generating electricity.

In addition, there is a strong pipeline of opportunities ahead for investment in clean energy. Between 2026 and 2030, WEC Energy Group plans to build and own approximately 6,035 MW of additional renewable energy capacity, more than quadrupling our carbon-free generation.




Proposed rate supports economic development while ensuring fairness for all customers.

In 2025, We Energies submitted a proposal with the Public Service Commission of Wisconsin for a new Very Large Customer (VLC) rate to accommodate expected significant growth in Wisconsin. The proposed rate meets the unique needs of very large customers, such as data centers, while protecting other customers and shareholders.

We designed the rate to make sure no costs to serve these new customers will be subsidized by, or shifted to, other residential or business customers. This is important to us and to the very large customers we have been working with — they are committed to paying their fair share.

We are seeking approval from state regulators for the new rate that supports the economic development, job growth and substantial investment in Wisconsin these companies are making, while ensuring fairness for all other customers. A decision is expected by May 2026.



Unleash the power of paper-free billing!

Break free from the limitations of paper bills and discover the power of managing your bill online.



Paper-free billing delivers your energy bill directly to your inbox — more quickly and securely. No more lost statements or, perhaps, missed due dates. Simply open your email and manage your bill on your schedule.

Why go paper-free?

- » **Convenience:** View your bill online, either as a summary or in the same detail as your paper bill. Download or print if you choose.
- » **Peace of mind:** Receive timely bill notifications and reminders, and set up one-time or automatic payments.
- » **Security:** Reduce the risk of lost or intercepted mail with digital delivery. Encrypted billing protects your personal information.
- » **Recordkeeping:** Quickly access billing statements that can be saved, searched and sorted.

While online, easily manage your energy costs by viewing bill history and comparing monthly energy use to identify trends and make adjustments.



Learn more and sign up at
[www.we-energies.com/
unleash-paper-free](http://www.we-energies.com/unleash-paper-free)



RECIPE CORNER

SLOW-COOKER *Pasta e Fagioli*

INGREDIENTS

- 2 cans (15.5 ounces each) cannellini beans, rinsed and drained
- 1 can (28 ounces) crushed tomatoes, undrained
- 8 ounces smoked sausage, halved lengthwise and sliced
- 2 medium carrots, chopped
- 2 medium celery ribs, chopped
- 1 small onion, chopped
- 3 garlic cloves, minced
- 1 teaspoon Italian seasoning
- 2 ounces parmesan cheese, grated ($\frac{2}{3}$ cup) and rind reserved
- 6 cups chicken broth
- $\frac{3}{4}$ cup uncooked ditalini pasta
- Salt and pepper to taste
- Additional parmesan cheese, grated

INSTRUCTIONS

Place the beans, tomatoes, sausage, carrots, celery, onion, garlic and Italian seasoning into a greased 6-quart slow cooker. Add reserved parmesan rind. Pour in chicken broth; stir to combine.

Cover and cook on low for 8-10 hours (or on high for 4-5 hours) or until carrots are tender. Stir in pasta. Cover and cook on high 20-30 minutes longer or until pasta is al dente.

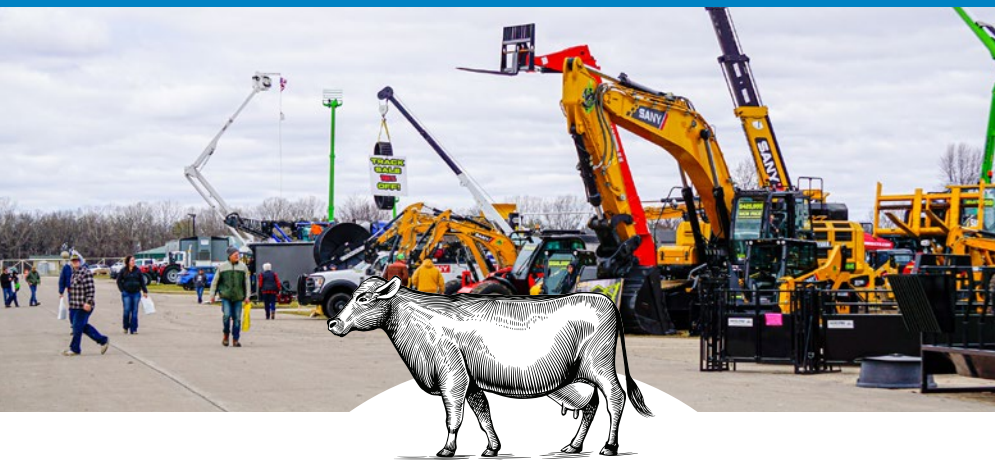
Reduce heat to low or set on warm. Gradually stir in grated parmesan until melted. Turn slow cooker off. Season with salt and pepper to taste. Serve with additional parmesan.



We Energies
1300 Janesville Ave.
Fort Atkinson, WI 53538

PRSRT STD
U.S. POSTAGE
PAID
MILWAUKEE, WI
PERMIT #3117

UPCOMING EVENTS



MAKE PLANS TO ATTEND THE 2026
WPS FARM SHOW



MARCH 24-26
EAA GROUNDS IN OSHKOSH

CONTACTS

Agriculture department staff

Jason Kollwelter

Manager – Agriculture Services
920-723-9366
jason.kollwelter@we-energies.com

Elizabeth Schwalbach

Senior Agriculture Account Manager – northern Wisconsin
920-450-1912
elizabeth.schwalbach@wecenergygroup.com

Brad Brusveen

Senior Agricultural Account Manager – southern Wisconsin
920-253-1322
bradley.brusveen@we-energies.com

Danny Leonard

Energy Engineer
920-433-2586
danny.leonard@wecenergygroup.com

We Energies emergency contact numbers

Electric power outage hotline
800-662-4797

Natural gas leak or emergency
800-261-5325