

INDOOR MODULAR METERING
1-PHASE, 3-WIRE, 120/240 OR 208Y/120 VOLTS, 0-200 AMPERES PER METER
ALL 3-PHASE VOLTAGES, 0-200 AMPERES PER METER

Obtain acceptance from the Company.

Customer furnishes and installs:

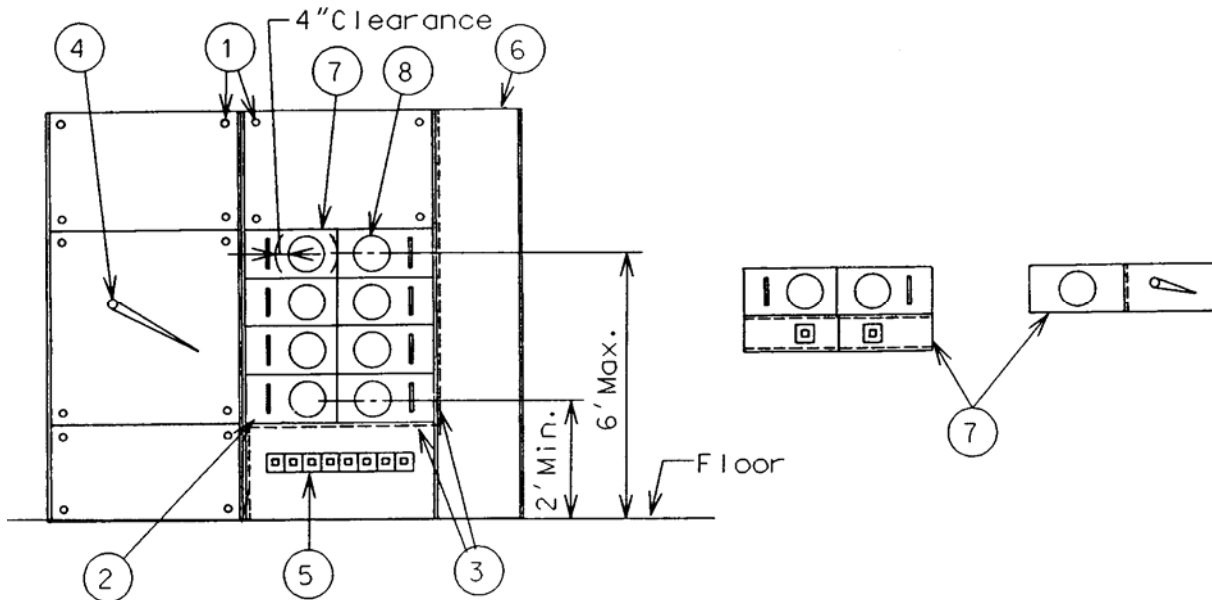
1. Provisions for sealing (see Note 1).
2. Sealable cover. Double covers must be equipped with handles.
3. Benelex or polyester barrier (see Note 2).
4. Main disconnect when required (see Note 3).
5. Individual tenant disconnects.
6. Load conductor wireway.
7. Modular meter units (see Notes 4, 5, 6, 7 & Sheet D-16).

Company furnishes and installs:

8. Watthour meters.

NOTES:

1. All covers which could expose unmetered bus shall have provisions for sealing.
2. All load wireways and lugs for connection of load conductors shall be separated by barriers from the meter area, and from unmetered bus.
3. This device as shown is not suitable for the direct termination of Company service conductors. See Overhead or Underground Sections of the manual for the appropriate termination methods.
4. For a 3-phase, 3-wire, 480 volt meter socket, there must be a center phase disconnecting link.
5. Provide 4" clearance around meter from all foreign objects.
6. The meter disconnect combination may consist of a preassembled module designed to be inserted into a bussted enclosure.
7. Each meter position shall be marked on the outside of the socket or by the breaker (if available) with the address of the unit served. If the marking is on the outside of the removable cover, it shall also be marked on the inside of the meter socket in a visible location. This marking shall also be placed on the corresponding distribution panel(s). The marking shall be a permanent label with 1/2" block letters and may consist of individual self-stick letters or numbers, suitable for the location so as to be considered permanent.



FULLY ASSEMBLED METERING SWITCHBOARD